

CAHERNANE HOUSE HOTEL ACCESS WELCOME GUIDE



Muckcross Road, Cahernane, Killarney, Co. Kerry,
V93 E78W, Ireland

+353 64 663 1895 | info@cahernane.com



CONTENTS

WELCOME	3
OUR COMMITMENT	4
EMPLOYEE TRAINING	5
LOCATION	6
KEY ACCESSIBILITY FEATURES	9
Getting Here	
Parking	
Reception & Lobby	
Lift Access	
Building Entrances	
Coach House	
Wheelchair Accessible Public Toilets	
Bedrooms and bathrooms - general	
Restaurant & Bar	
ACCESSIBLE DESTINATION HIGHLIGHTS	20
EMERGENCY AND MEDICAL INFORMATION	21
GALLERY	22



YOU ARE WELCOME

This Access Statement has been prepared to give you a clear and accurate overview of the layout, facilities and services available to our guests, helping you plan your visit with confidence and ease.

If you require any additional information that is not covered here, please do not hesitate to contact us on +353 (0)64 6631895 or email info@cahernane.com. Our team will be delighted to discuss your individual needs and offer any assistance we can to ensure your stay is as comfortable and enjoyable as possible.

OUR COMMITMENT



At Cahernane House Hotel, we are dedicated to providing warm, personalised service for every guest, ensuring comfort, dignity, and ease of access throughout their stay. Our goal is to anticipate needs and remove barriers, physical or otherwise, for guests with disabilities or limited mobility offering universal access for all.

We believe that everyone should be treated equally regardless of their age impairments or long term health conditions. We recognise the importance of making our facilities, services information and employment accessible.

EMPLOYEE TRAINING



Our Employees receive ongoing training from management and externally on disability awareness, diversity and inclusion to allow us to a superior service within an inclusive environment.

Please contact our Team should you require any additional information:

Telephone +353 (0)64 663 1895

Email : info@cahernane.com

GOOGLE MAPS CO-ORDINATES

The Google Maps coordinates for Cahernane House Hotel are approximately 52.0432°N, 9.5100°W.

This places the hotel just outside the centre of Killarney, on the edge of Killarney National Park, with the postal code V93 E78W.



GETTING HERE FROM THE AIRPORT



The Cahernane House Hotel is located on the Muckcross Road (N71), on the right hand side of the road approximately 1 km from Killarney Town Centre.

Arrival from Cork taking the N22 to Killarney, following signs for the Muckcross Road N71. We are located on the right hand side of the road, just after the Flesk Bridge.

Arrival from Kerry Airport, taking the N22 to Killarney, once you enter Killarney, follow the signs for the Muckcross Road. We are located on the right hand side of the road, just after the Flesk Bridge.

From Shannon Airport, or Limerick, take the N18 to Limerick, then Follow the N21 to Castleisland, followed by the N22 to Killarney. Follow the signs for the Muckcross Road. We are located on the right hand side of the road, just after the Flesk Bridge.

GETTING HERE BY BUS/TRAIN



If you are travelling by train or bus, we will happily organise a transfer or a taxi for you to and from the bus or train station.

Euro Taxi's Killarney - +353 (0) 64 6637676 - Wheelchair accessible taxi's can be ordered in advance of arrival.

Sage Taxi:+353 (0)86 – 1542890 www.sagetaxis.ie

PARKING



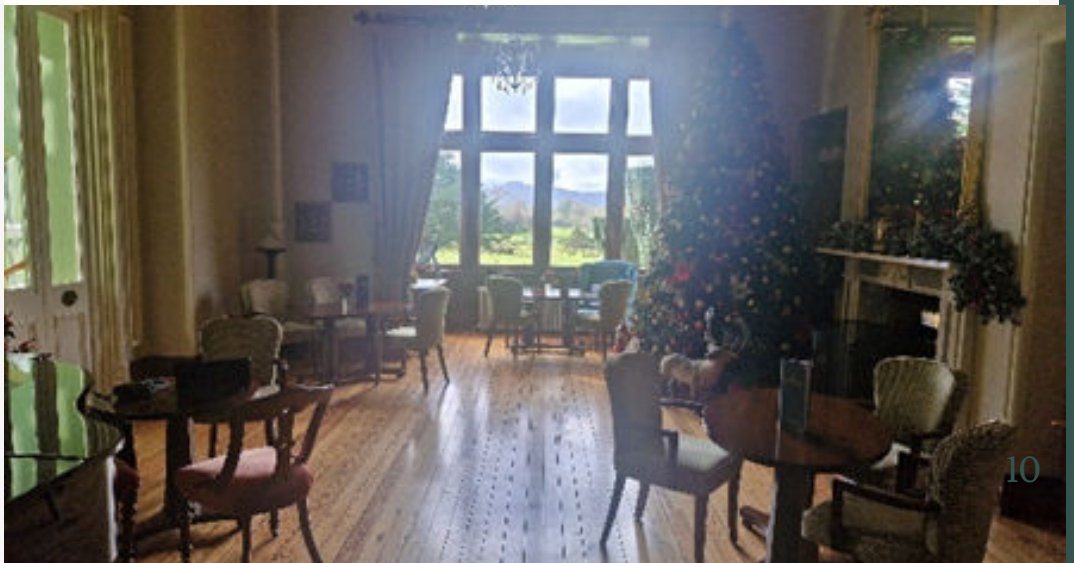
Cahernane has two dedicated Wheelchair Accessible Parking Bays outside the hotel entrance with level access to a Lift that leads to reception. The footpath surface is made up of tarmac and chipped stone.



RECEPTION & LOBBY



- Ground Floor (Lift Level 1) – Drawing Room, Library, Reception, Dining Room
- Seating available for guests throughout
- Reception desk height: 76 cm; chairs available for check-in
- Wooden flooring in Reception area
- Armchairs provided in lobby for guest comfort



LIFT ACCESS & CORRIDORS



Corridors:

- Original Manor House has multiple stairwells to access corridors; lift available to all floors except 4th floor (5 steps required)
- Minimum corridor width: 123 cm
- Staff can assist guests with mobility issues to access rooms
- Lift access to all floors
- Lift door width (fully open): 80 cm
- Internal lift size: 107 cm wide × 146 cm deep
- Lift control buttons height: 100 cm, marked with Braille
- Lift stops announced visually
- Doorway from lift to reception: 76 cm wide

Lift access to all floors:

- -1 Level – Cellar Bar & bathrooms
- 1st Floor – Lobby, Restaurant, Library, Drawing Room (5 steps to Atrium)
- 2nd & 3rd Floors – Guestrooms
- 4th Floor – Superior & Signature Manor Rooms (access via 5-step staircase)

ENTRANCES



- **Main Lobby Entrance (via Steps):** Accessed by a staircase leading to the first floor lobby which has 8 steps leading up to the entrance door, a handrail is present on both sides of the steps. The main entrance door is a manual door with a round handle.
- **Accessible Entrance (Ground Level):** Step-free access available at the ground level entrance, which leads directly to the elevator providing access to all guest floors and main public areas with the exception of the 4th floor in the main house, which has 5 steps once you leave the elevator to gain access to the bedrooms on this floor.

COACH HOUSE



Our Coach House guestrooms, located just outside the main Cahernane House, offer guests a charming and peaceful retreat in a beautifully restored stone farm-style building. The building contains 8 guestrooms arranged over two levels, less than a one-minute walk from the hotel's front door.

- Distance & Pathways; building is under 1-minute level walk from hotel entrance
- Two paths:
 - Slate tile – smooth, wheelchair/mobility aid friendly
 - Gravel – less suitable for wheelchairs/walking frames
- Both paths have gentle slope, no steps
- Courtyard Access - flat slate-tiled courtyard, no steps
- Four ground-floor rooms accessible directly from courtyard

COACH HOUSE GUESTROOMS



- The Coach House is separate from the main hotel, accessed via an outdoor path.
- There is no elevator located within the Coach House

Room Layout and Accessibility

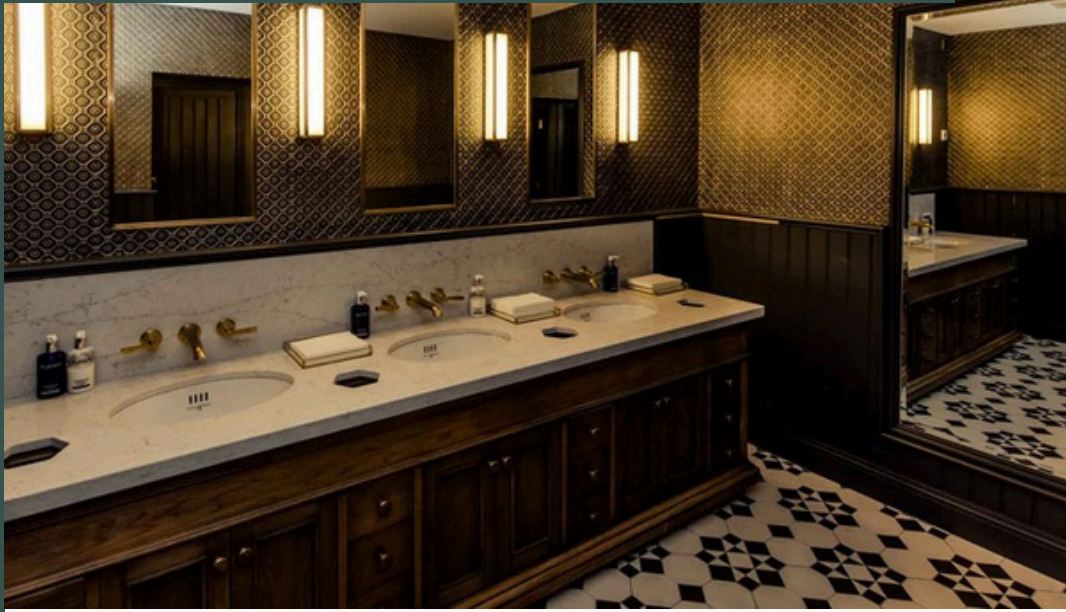
Ground-Floor Rooms (4)

- Step-free entry from courtyard
- Walk-in showers
- Fully accessible for guests with limited mobility

Upper-Floor Rooms (4)

- Access via 1–2 short flights of stairs
- Walk-in showers
- Not suitable for wheelchair users or guests with significant mobility challenges

ACCESSIBLE PUBLIC TOILET



- Independent wheelchair-accessible bathroom on ground floor (Level 0, near lift)
- Entrance door width: 83 cm, round handle
- Coat hooks at two heights, reachable from seated position
- Toilet height: 47 cm
- Clear space to left of toilet: 120 cm
- Sink height: 69 cm
- Mirror usable from seated position
- Tiled flooring
- Baby changing unit available
- Emergency alarm cord for assistance

ACCESSIBLE GUESTROOMS



- 34 guest rooms accessible via level access for guests with walking difficulties
- All rooms have en-suite bathrooms with walk-in showers (some with raised edges)
- Measurements based on Deluxe Rooms; room sizes vary due to building age
- Wooden flooring in all bedrooms (no carpet)
- Manual key access
- Single and double beds available
- Bed height (to top of mattress): 28 cm, not adjustable
- Wardrobe rail height: 160 cm
- Electrical sockets and switches at 80 cm above floor level

EN SUITE BATHROOMS



- Clear door opening width: 66 cm
- Most showers have a small step for entry
- Tiled, non-slip bathroom flooring
- Hair dryer available in bedroom
- Bathroom door opens inwards (66 cm opening width)
- Toilet seat height: 46 cm
- Clear space to left of toilet: 90 cm
- Shower support rail in each shower
- Lower edge of mirror: 120 cm

HERBERT'S BRASSERIE



- Level access to Herbert's Brasserie
- Manual entrance door (left open during service)
- Entrance door width: 100 cm
- Some breakfast items are self-service; all items available to order from menu
- Mostly rectangular tables
- Soft background music during service
- Neutral décor throughout
- Quieter dining available in the Drawing Room on request
- Knee clearance under tables: 70 cm
- Minimum walkway width between tables: 110 cm
- Tables and chairs are movable
- Large-print menus available on request
- All menus include allergen information
- Portable card machines brought to the table
- High chairs available for children
- Menu can be adapted for special diets on request

CELLAR BAR



- The Cellar Bar has two entry points to the hotel
- External entrance: 12 steps down to bar area
- Level access via Front Atrium and elevator to -1
- Bar door width: 86 cm
- Table service available
- Rectangular tables
- Tables movable with 70 cm knee clearance underneath

ACCESSIBLE DESTINATION



Please find link below to allow you to view an Kerry accessibility guide, which includes Transport, attractions & activities and exploring outdoors within the Kerry area.

<https://www.discoverkerry.com/plan-your-visit/accessible-destination-accessibility-guide/>

Please also find a local guide to Killarney.

<https://killarney.ie/things-to-do/>

RENTAL OF MEDICAL & MOBILITY EQUIPMENT

- Mobility Genie – Farranfore, 20 mins from hotel; rents medical & mobility equipment.

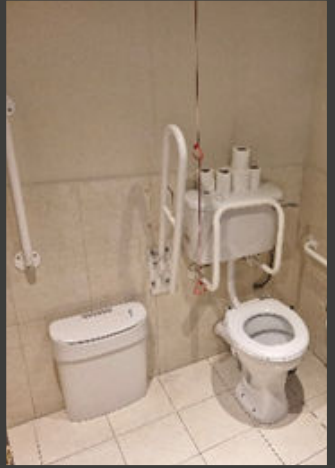
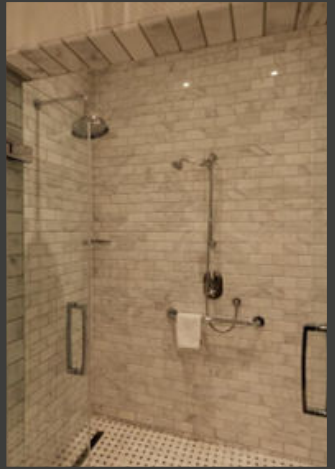
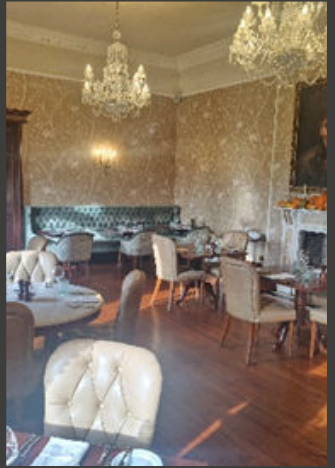
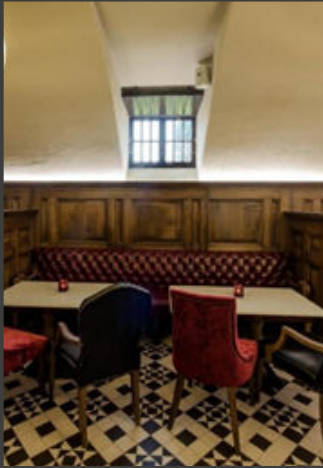
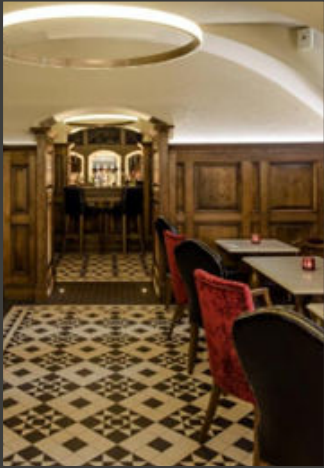
Email: customerservice@mobilitygenie.ie

- O'Flynn Medical – Macroom, approx. 40 mins from Killarney; supplies medical equipment

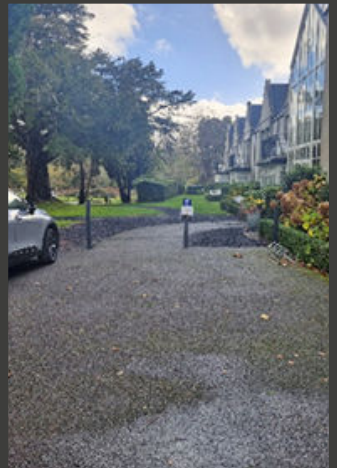
Website: www.oflynnmedical.com

Tel: 0818 440 440 / +353 (0)29 21799

GALLERY



GALLERY



We Look Forward to
Welcoming You to Cahernane



BOOK YOUR STAY